

GALLERY

United Kingdom and Ireland

2025

Contact us to book



VMZINC

Introduction



Company profile

VMZINC® has been manufacturing a wide range of rolled zinc products used primarily for building envelopes since 1837. In addition to batten cap and standing seam roof systems, products include rainwater systems, a wide range of cladding systems, including a number of rainscreen facade products. Since its creation the company has also produced decorative roofing products such as dormers, bull's eyes, weather vanes, finials and balustrades.

Benefits of VMZINC®

- Lightweight and durable
- Fully recyclable
- A service life of 100 years
- Virtually maintenance-free
- Can be installed on roof pitches as low as 3°
- Complex shapes can be clad using VMZINC
- All flashings and trim can be in the same material
- BRE EPD profile EN 15804
- BBA certified
- Conforms to EN 988
- Fire performance – No flame spread or penetration following Brooft4 testing. Fire classification according to EN 13501-1:2018 – A1
- Available in a choice of either natural finish or 10 pre-weathered finishes
- Cost effective
- Wide range of panel types

Front cover building credit

Architect: PIP Architects and Moses Cameron Williams Architects Project: Old Swiss Laundry

UNESCO recognises zinc roofers and ornamentalists

The traditional art and heritage of zinc roofing and ornamentation is passed down from generation to generation through roofing training centres in Paris and across France.

UNESCO, on December 4th, 2024, recognised the importance of maintaining the continuity of this traditional art and heritage by adding the "Know-how of Parisian Zinc Roofers and Ornamentalists" to its Indicative list of the Intangible Cultural Heritage of Humanity.

The Syndicate of French Companies in Climate Engineering, Roofing, and Plumbing (the GCCP), VMZINC, Mayor Delphine Bürkli of Paris's 9th arrondissement, and other companies, joined together to make this significant recognition happen!



VMZINC Finishes

Contents

Public/Private Housing

Educational/Recreational

Cultural

Commercial/Healthcare



4 Channels Development – Housing



9 Mote Park – Pavilion and Café



12 Eyemouth Pavilions – Civic Centre



15 10 Greycoat Place – Offices



18 Inishowen – Commercial Development



21 Roxburghe Hotel



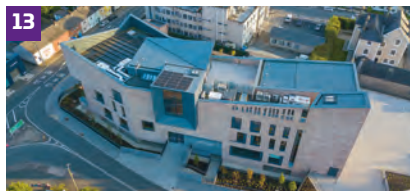
6 Annesley Gardens – Housing



5 Dover Court – Public Housing



10 Park Lane School – SEND School



13 Monaghan Peace Campus – Cultural Centre



16 19 Dacre Street – Offices



19 Old Swiss Laundry – Business Development



22 Voco Hotel



7 Baligundle – Private House



8 Stagecoach The Depot – Housing



11 St Crispin's – Student Accommodation



14 The Edge – Cultural Centre



17 Feilden House – Offices



20 RNLI – Lifeboat Station



23 St Mary's Hospital

Public/Private Housing

Housing

**Channels
Development,
Chelmsford**

Architect
JAP Architects

Contractor
Full Metal Jacket Ltd

Type of zinc
QUARTZ-ZINC PLUS

System used
Standing seam roofing

Surface area of zinc
1800m²

Photo credit
Paul Kozlowski



Public/Private Housing

Public Housing

Dover Court, London N1

Architect

Pollard Thomas Edwards
Architects

Contractor

NDM Metal Roofing
and Cladding
(no longer active)

Type of zinc

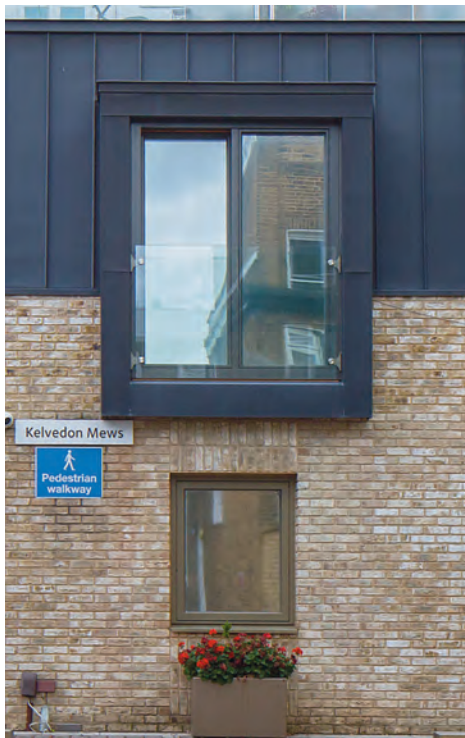
ANTHRA-ZINC PLUS

System used

Standing seam roofing

Surface area of zinc
900m²

Photo credit
Paul Kozlowski



Public/Private Housing

Housing

Annesley Gardens, Dublin

Architect
Metropolitan Workshop

Contractor
Joe Duffy Roofing Ltd

Type of zinc
PIGMENTO RED PLUS
and
QUARTZ-ZINC PLUS

System used
Standing seam roofing
and facades

Surface area of zinc
1600m²

Photo credit
Paul Kozlowski



Public/Private Housing

Private House

**Baligrundle,
Isle of Lismore,
Scotland**

Architect
CP Architects

Contractor
HL Metals

Type of zinc
PIGMENTO CHARCOAL
BLUE PLUS

System used
Standing seam roofing
and facades

Surface area of zinc
300m²

Photo credit
Paul Kozlowski



Public/Private Housing

Housing

Stagecoach, The Depot, Manchester

Architect
Buttress Architects

Contractor
North West
Metal Roofing

Type of zinc
ANTHRA-ZINC PLUS

System used
Standing seam roofing

Surface area of zinc
5500m²



Educational/Recreational

Pavilion and Café

Mote Park, Maidstone

Architect
GDM Architects

Contractor
Salmon Solutions

Type of zinc
ANTHRA-ZINC PLUS

System used
Standing seam roofing
and cladding

Surface area of zinc
750m²

Photo credit
Paul Kozlowski



Educational/Recreational

SEND School

Park Lane School, Macclesfield

Architect
Halliday Meecham
Architects

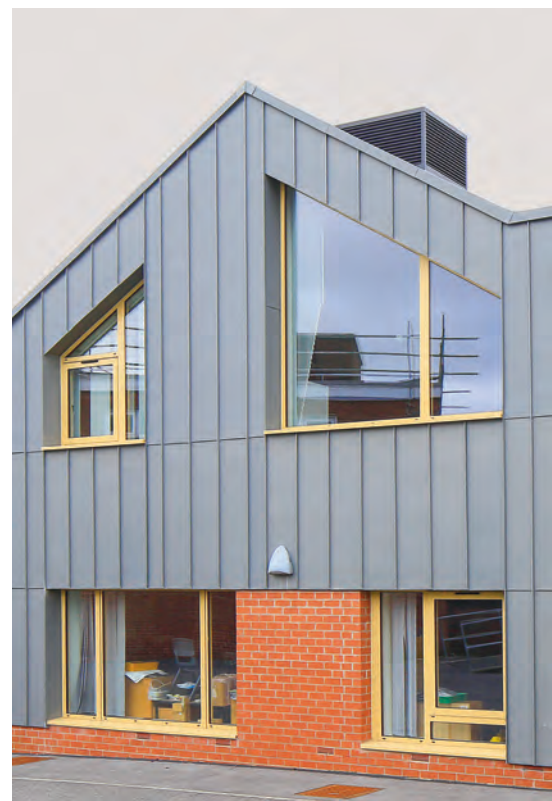
Contractor
Longworth

Type of zinc
QUARTZ-ZINC PLUS

System used
Standing seam roof
and wall

Surface area of zinc
450m²

Photo credit
Paul Kozlowski



Educational/Recreational

Student Accommodation

St Crispin's House, Norwich

Architect

Hadfield Cawkwell
Davidson

Contractor

Winkworth Metal
Roofing Ltd

Type of zinc

QUARTZ-ZINC

System used

Standing seam
facade

Surface area of zinc

700m²

Photo credit
Paul Kozlowski



Cultural Civic Centre

Eyemouth Pavilions, Eyemouth, Scotland

Architect
Galmstrup Architects

Contractor
FD Roofing and
Cladding Ltd

Type of zinc
QUARTZ-ZINC PLUS

System used
Standing seam roofing

Surface area of zinc
300m²

Photo credit
Paul Kozlowski



Cultural

Cultural Centre

Monaghan Peace Campus, Ireland

Architect

Hall Black Douglas
Architects

Contractor

Sealmax Roofing Ltd

Type of zinc

PIGMENTO BLUE PLUS

System used

Standing seam roofing
and cladding

Surface area of zinc
1300m²

Photo credit
Paul Kozlowski



Cultural

Cultural Centre

The Edge, Whitehaven

Architect
Northmill Associates

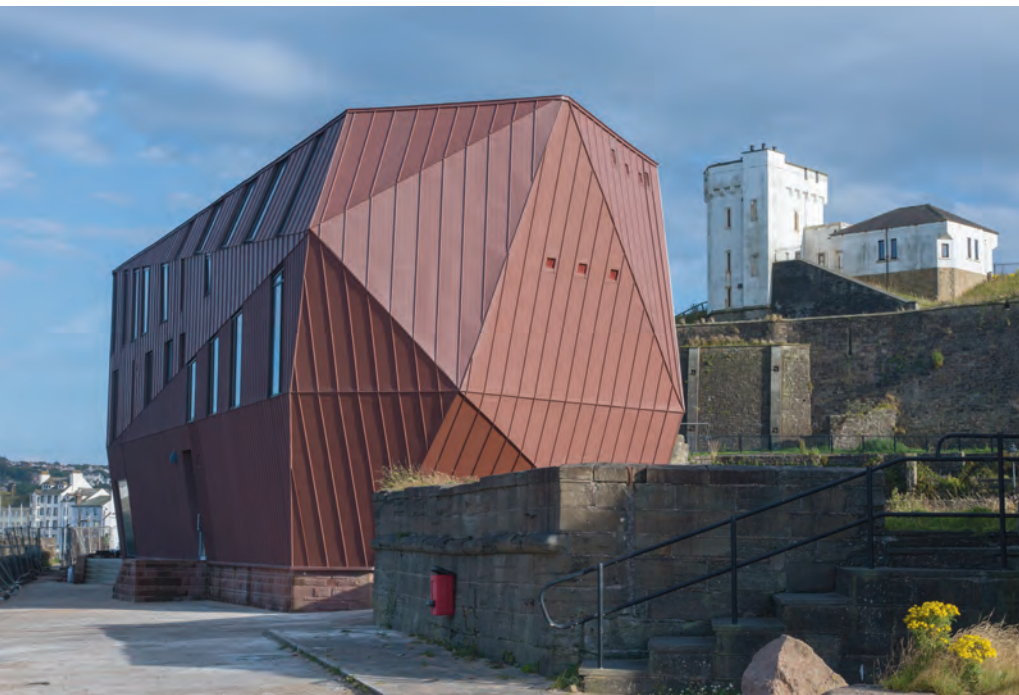
Contractor
Lindas Group Ltd

Type of zinc
PIGMENTO RED PLUS

System used
Standing seam roofing
and cladding

Surface area of zinc
1000m²

Photo credit
Paul Kozlowski



Commercial/Healthcare Offices

10 Greycoat Place, London

Architect

Veretec and SPPARC

Contractor

Albany Brent Roofing
(no longer active)

Type of zinc

PIGMENTO RED

System used

Standing seam roofing

Surface area of zinc

800m²

Photo credit
Paul Kozlowski



Commercial/Healthcare Offices

**19 Dacre Street,
London**

Architect
Darling Associates
Architects

Contractor
Salmon Solutions

Type of zinc
PIGMENTO BLUE

System used
Standing seam facades

Surface area of zinc
350m²

Photo credit
Paul Kozlowski



Commercial/Healthcare Offices

Feilden House, Norwich

Architect
Feilden+Mawson
Architects

Contractor
Zink.It Limited

Type of zinc
QUARTZ-ZINC
and
PIGMENTO BROWN

System used
Standing seam facade
and flat lock

Surface area of zinc
1000m²

Photo credit
Paul Kozlowski



Commercial/Healthcare

Commercial Development

**Inishowen
Innovation,
Buncrana,
Ireland**

Architect
MacGabhann
Architects

Contractor
Edgeline Metal
Roofing

Type of zinc
PIGMENTO BLUE PLUS

System used
Standing seam roofing
and cladding +
flat lock wall cladding

Surface area of zinc
570m²

Photo credit
Paul Kozlowski



Commercial/Healthcare

Business Development

Old Swiss Laundry, Cambridge

Architect

PiP Architects
and
Moses Cameron
Williams Architects

Contractor

All Metal Roofing Ltd
and
A Class Metal Roofing Ltd

Type of zinc

PIGMENTO ORANGE,
QUARTZ-ZINC
and ANTHRA-ZINC

System used

Standing seam, batten,
Adeka and interlocking
panels

Surface area of zinc
3800m²

Photo credit
Paul Kozlowski



Commercial/Healthcare

Lifeboat Station

**RNLI
Tower Lifeboat
Station,
London**

Architect
Studio Four Architects

Contractor
Zinclad

Type of zinc
QUARTZ-ZINC PLUS

System used
Standing seam roof
and walls

Surface area of zinc
950m²

Photo credit
Paul Kozlowski



Commercial/Healthcare

Hotel

Roxburghe Hotel, Kelso, Scotland

Architect
ISA

Contractor
Pinnacle Roofing Ltd

Type of zinc
QUARTZ-ZINC PLUS

System used
Standing seam roofing

Surface area of zinc
1690m²

Photo credit
Paul Kozlowski



Commercial/Healthcare

Hotel

**Voco Hotel,
Torphichen Street,
Edinburgh**

Architect
Mason facades

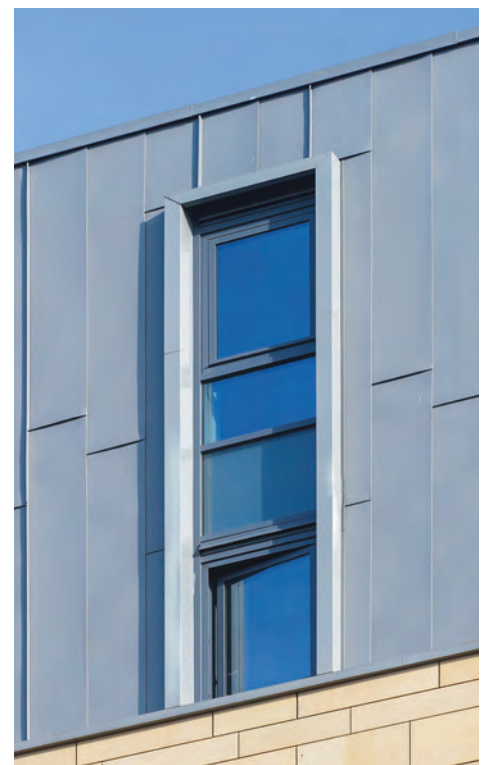
Contractor
Mason Facades

Type of zinc
QUARTZ-ZINC

System used
Standing seam
and
flat lock wall panels

Surface area of zinc
1000m²

Photo credit
Paul Kozlowski



Commercial/Healthcare

Hospital

**St Mary's Hospital,
Drogheda,
Ireland**

Architect
Kennedy Fitzgerald
Architects

Contractor
Sealbuild Ltd

Type of zinc
PIGMENTO BROWN
PLUS

System used
Standing seam roofing
and cladding

Surface area of zinc
1200m²

Photo credit
Paul Kozlowski



Usage and contact information

Use a Professional

As well as following design recommendations it is critical that VMZINC is installed in the correct manner and by trained professionals.

VMZINC provides training for installers with experience in metal roofing and cladding in partnership with the Lead Sheet Training Academy and the NCTS. This training is designed to supplement trained professionals with specific information concerning VMZINC.

VMZINC at Work

We would also recommend that contractors be members of associations such as the Federation of Traditional Metal Roofing Contractors. Furthermore, VMZINC offers a list of recognised contractors that adhere to specific conditions concerning experience and training, namely VMZINC at WORK.

RIBA Approved CPD Seminars

Please contact us to book a CPD seminar entitled 'Zinc as Building Envelope' or 'Zinc as a Facade Material'. This seminar covers many subjects including aesthetics, applications, design requirements, installation methods as well as sustainability.

CAD Details

A large library of CAD drawings in both .dwg and .pdf format is available. We also offer BIM objects.

NBS Specifications

We offer specifications for all of our systems. These can be either downloaded or sent out from our office.

Bespoke Roof and Wall Design

Panel layouts and project specific details can be created for projects when standard detailing may not quite be enough.

Samples

Please contact us for material samples on all of our finishes. We can also send out larger samples for planning. All our literature is available online.

VM Building Solutions UK Ltd

Collier House,
Mead Lane,
Hertford, Herts,
SG13 7AX

Web www.vmpzinc.co.uk

Tel 01992 921 300

Email vmzinc.uk@vmbuildingsolutions.com

