

2017 Edition

1800  
years  
Creating tomorrow's  
heritage

1837

2017

# VMZINC GALLERY

United Kingdom  
and  
Ireland

# Introduction

**Company Profile** VMZINC® has been manufacturing a wide range of rolled zinc products used primarily for building envelopes since 1837. In addition to batten cap and standing seam roof systems, products include rainwater systems, a wide range of cladding systems, including a number of rainscreen facade products. Since its creation the company has also produced decorative roofing products such as dormers, bull's eyes, weather vanes, finials and balustrades.



## Benefits of VMZINC

- Lightweight and durable
- Fully recyclable
- A design life of 80 years
- Virtually maintenance-free
- Can be installed on roof pitches as low as 3°
- Complex shapes can be clad using VMZINC
- All flashings and trim can be in the same material
- BRE Green Guide certified
- BBA certified
- Conforms to EN 988
- Fire performance rating 'AA' - BS 476: Part 3 ('low vulnerability' class in Scotland). Fire classification according to EN 13501-1:2002 - A2-s1,d0
- Available in a choice of either natural finish or 7 pre-weathered finishes as well as Bespoke PIGMENTO colours
- Cost effective
- Wide range of panel types



VMZINC Finishes



# Contents

## Commercial Development



4  
Loch Arthur – Farm Shop



5  
Cambrian House – Mixed Development



6  
Heathrow Approach HQ – Offices

## Public Service Building



8  
Queen Elizabeth – Hospital Teaching Facility



10  
Waterford Fire Station – Headquarters



11  
Southampton General Hospital

## Educational/Cultural Building



12  
Maxwell Centre – University Laboratory



14  
Selwyn College – Halls of Residence



15  
British Golf Museum

## Collective Housing



16  
Woodcroft – Mixed Flats



18  
Fulham Riverside – Mixed Development



20  
Greenwich Millennium Village – Duplexes



21  
Cardiff Pointe – Flats and Town Houses

## Private House Review



22



22



23



# Commercial development

## Farm shop

**Loch Arthur Farm,  
Beeswing,  
Dumfries**

**Architect**  
Simon Winstanley  
Architects

**Contractor**  
Zinc and Copper  
Roofing Specialists

**Type of zinc**  
QUARTZ-ZINC PLUS

**System used**  
Standing seam roofing  
plus  
gutters and downpipes

**Surface area of zinc**  
1800m<sup>2</sup>

**Photo credit**  
Paul Kozlowski





# Commercial development

## Mixed development

### **Cambrian House, Shrewsbury**

**Architect**  
Irvin-Wright

**Contractor**  
MH Midland

**Type of zinc**  
AZENGAR  
and  
ANTHRA-ZINC

**System used**  
Flat lock, interlocking  
and standing seam  
facade panels

**Surface area of zinc**  
1850m<sup>2</sup>

**Photo credit**  
Paul Kozlowski



# Commercial development

## Offices

### Heathrow Approach Headquarters

**Architect**  
MCM Architecture

**Contractor**  
Belfry

**Type of zinc**  
QUARTZ-ZINC

**System used**  
Interlocking panel

**Surface area of zinc**  
750m<sup>2</sup>

**Photo credit**  
Paul Kozlowski









# Public Service Building

Hospital teaching and learning facility

**Southern General  
Hospital,  
Queen Elizabeth  
Building**

**Architect**  
BMJ Architects

**Contractor**  
Lakesmere

**Type of zinc**  
QUARTZ-ZINC PLUS,  
PIGMENTO GREEN PLUS  
and  
PIGMENTO BLUE PLUS

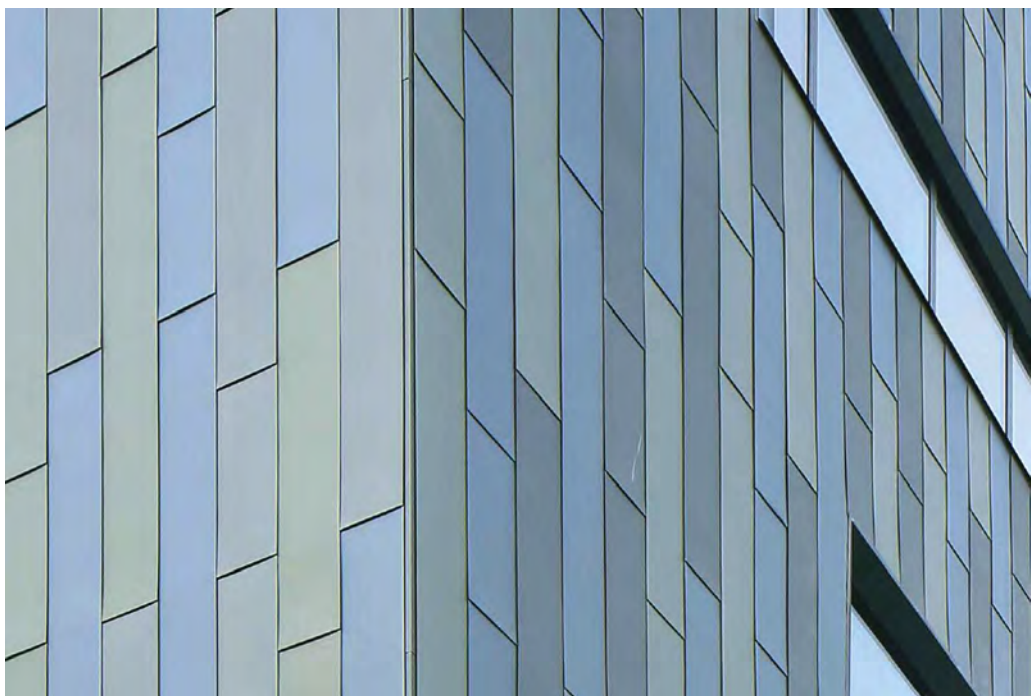
**System used**  
Flat lock panels

**Surface area of zinc**  
2000m<sup>2</sup>

**Photo credit**  
Paul Kozlowski









# Public Service Building

Fire service headquarters

## Waterford Fire Station

### Architect

McCullough Mulvin  
Architects

### Contractor

A&A Quinn Roofing  
Solutions

### Type of zinc

QUARTZ-ZINC PLUS

### System used

Standing seam roofing  
and cladding

### Surface area of zinc

2550m<sup>2</sup>

Photo credit  
Jamie Malone





# Public Service Building

## Hospital

### Southampton General Hospital

**Architect**  
IBI Nightingale

**Contractor**  
Pace

**Type of zinc**  
QUARTZ-ZINC PLUS,  
PIGMENTO GREEN PLUS  
and  
PIGMENTO BLUE PLUS

**System used**  
Flat lock wall cladding

**Surface area of zinc**  
1300m<sup>2</sup>

**Photo credit**  
Paul Kozlowski





# Educational/cultural building

## University Laboratory

### Maxwell Centre, Cambridge

Architect  
BDP

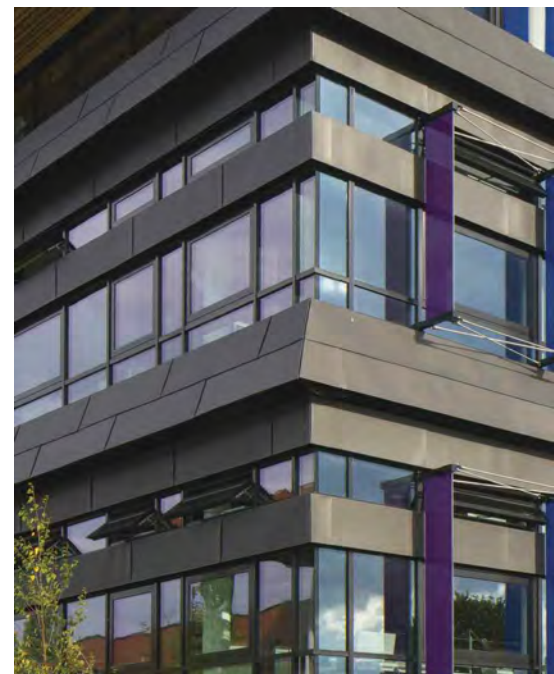
Contractor  
All Metal Roofing

Type of zinc  
AZENGAR  
and  
ANTHRA-ZINC

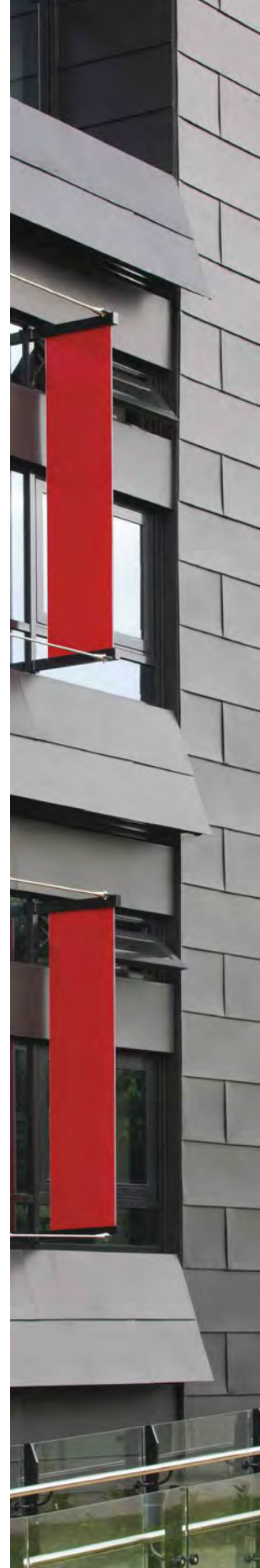
System used  
Flat lock

Surface area of zinc  
1400m<sup>2</sup>

Photo credit  
Paul Kozłowski









# Educational/cultural building

## Halls of residence

### Selwyn College, Cambridge

Architect  
Purcell

Contractor  
T R Freeman

Type of zinc  
QUARTZ-ZINC PLUS

System used  
Flat lock

Surface area of zinc  
800m<sup>2</sup>

Photo credit  
Paul Kozlowski





# Educational/cultural building

## Museum

### British Golf Museum, St. Andrews

#### Architect

Richard Murphy Architects

#### Contractor

MBM

#### Type of zinc

QUARTZ-ZINC STRAT PLUS  
and  
ANTHRA-ZINC STRAT PLUS

#### System used

Standing seam roofing  
and cladding

#### Surface area of zinc

550m<sup>2</sup>

#### Photo credit

Paul Kozlowski





# Collective housing

## Mixed flats

### Woodcroft, Edinburgh

**Architect**  
Michael Laird Architects

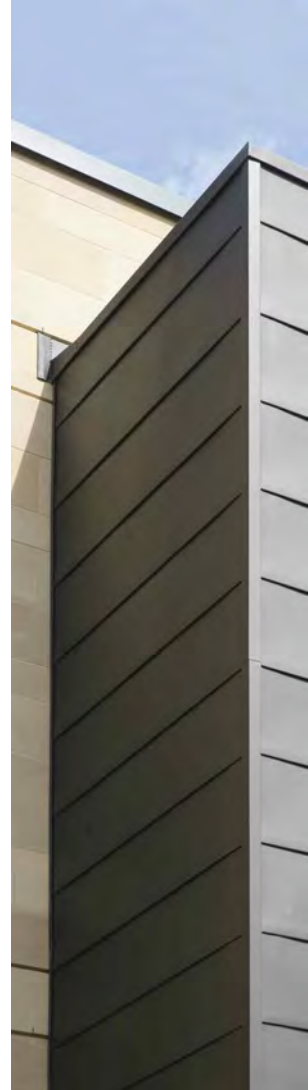
**Contractor**  
D Blake

**Type of zinc**  
ANTHRA-ZINC PLUS

**System used**  
Standing seam roofing,  
flat lock facade  
and downpipes

**Surface area of zinc**  
1500m<sup>2</sup>

**Photo credit**  
Paul Kozłowski









# Collective housing

Mixed private development

## Fulham Riverside, London

**Architect**  
Broadway Malyan

**Contractor**  
Avonside London

**Type of zinc**  
QUARTZ-ZINC PLUS  
and  
Bespoke PIGMENTO PLUS

**System used**  
Standing seam roofing  
and cladding plus  
gutters and downpipes

**Surface area of zinc**  
14000m<sup>2</sup>

**Photo credit**  
Paul Kozlowski









# Collective housing

## Duplexes

### Greenwich Millennium Village

#### Architect

Jestico and Whiles

#### Contractor

Roles Broderick Roofing

#### Type of zinc

PIGMENTO RED, GREEN  
and BLUE

#### System used

Interlocking panels

#### Surface area of zinc

4800m<sup>2</sup>

#### Photo credit

Paul Kozlowski





# Collective housing

## Flats and town houses

### Cardiff Pointe

#### Architect

Scott Brownrigg

#### Contractor

Kingsley Group

#### Type of zinc

ANTHRA-ZINC PLUS  
and  
ANTHRA-ZINC STRAT PLUS

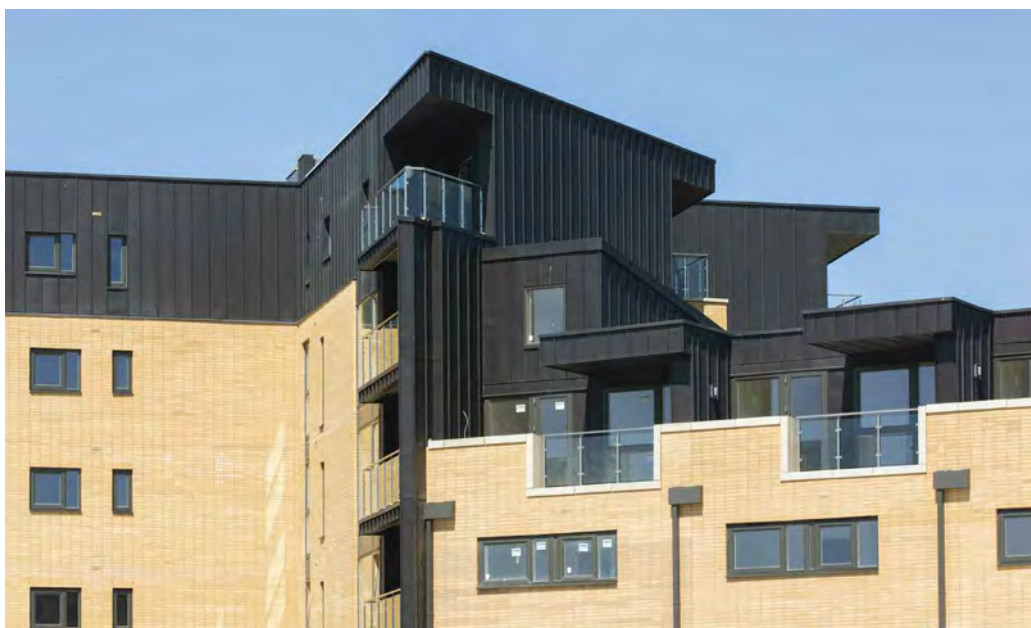
#### System used

Standing seam roofing  
and cladding  
plus  
gutters and downpipes

#### Surface area of zinc

8000m<sup>2</sup>

Photo credit  
Paul Kozlowski





# Private house review

## Domestic versatility

A

Leedingham Jameson  
Rogers and Hynd

B

Bennetts Associates

C

Muir Walker and Pride

D

Jestico and Whiles









## Use a Professional

As well as following design recommendations it is critical that VMZINC is installed in the correct manner and by trained professionals.

VMZINC provides training for installers with experience in metal roofing and cladding in partnership with the Lead Sheet Association. This training is designed to supplement trained professionals with specific information concerning VMZINC.

## VMZINC at Work

We would also recommend that contractors be members of associations such as the Federation of Traditional Metal Roofing Contractors. Furthermore, VMZINC offers a list of recognised contractors that adhere to specific conditions concerning experience and training, namely VMZINC at WORK.

## CAD Details

A large library of CAD drawings in both .dwg and .pdf format is available. We also offer BIM objects.

## NBS Specifications

We offer specifications for all of our systems. These can be either downloaded or sent out from our office.

## CPD Seminars

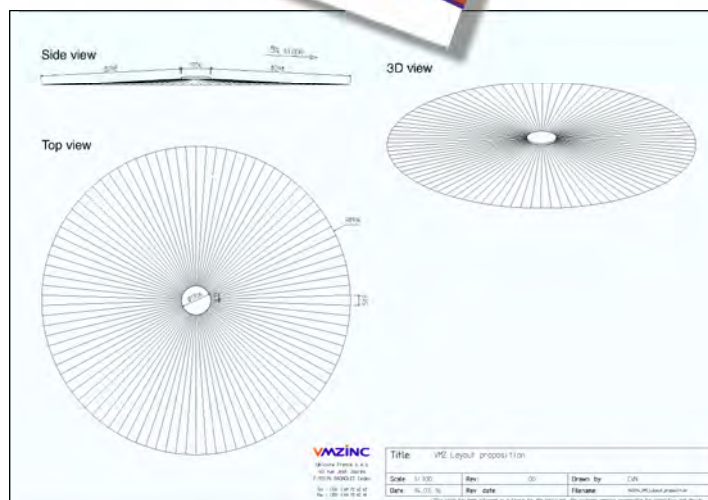
Please contact us to book a CPD seminar entitled 'Zinc as Building Envelope'. This seminar covers many subjects including aesthetics, applications, design requirements, installation methods as well as sustainability.

## Bespoke Roof and Wall Design

Panel layouts and project specific details can be created for projects when standard detailing may not quite be enough.

## Samples

Please contact us for material samples on all of our finishes. We can also send out larger samples for planning. All our literature is also available online and in paper format.



**VMZINC**  
Collier House,  
Mead Lane,  
Hertford, Herts,  
SG13 7AX

[vmzinc.uk@vmzinc.com](mailto:vmzinc.uk@vmzinc.com)  
[www.vmzinc.co.uk](http://www.vmzinc.co.uk)  
01992 822288