

VM BUILDING SOLUTIONS

VMZINC Overlapping panel



Presentation

VMZINC Overlapping panel is a wall-mounted cladding system made up of horizontal overlapping panels fixed to the substructure using brackets.

The system is designed to be compatible with external insulation.

The panels fit easily into each other, making them quick and easy to install.



Key advantages



Easy to install: VMZINC Overlapping panel is lightweight and easy to install: the panels fit easily into each other. The panels can be cut easily on-site, without creating any dust.



A low maintenance material: Zinc does not require any particular maintenance. It remains aesthetically harmonious throughout its lifespan.



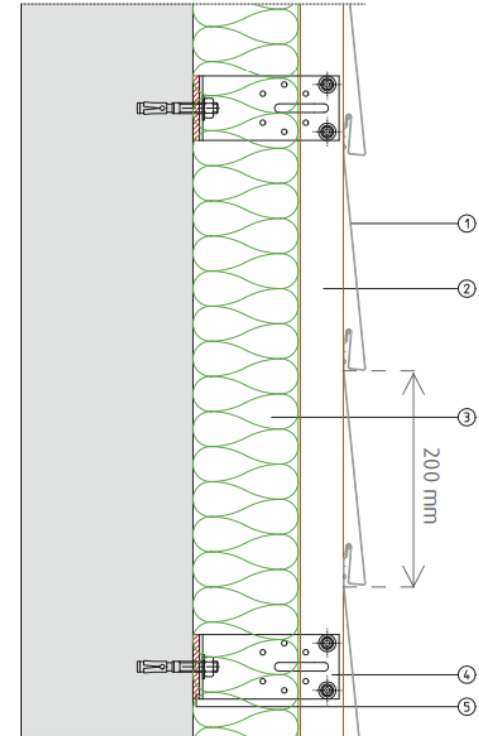
Economic in the purchase and in the pose, VMZINC Overlapping panel can be installed with a thermal insulation from the outside to increase performance.



A durable natural material : VMZINC Overlapping panel is manufactured using rolled copper titanium zinc that complies with European standard EN 988. It is also rot-proof and non-flammable.



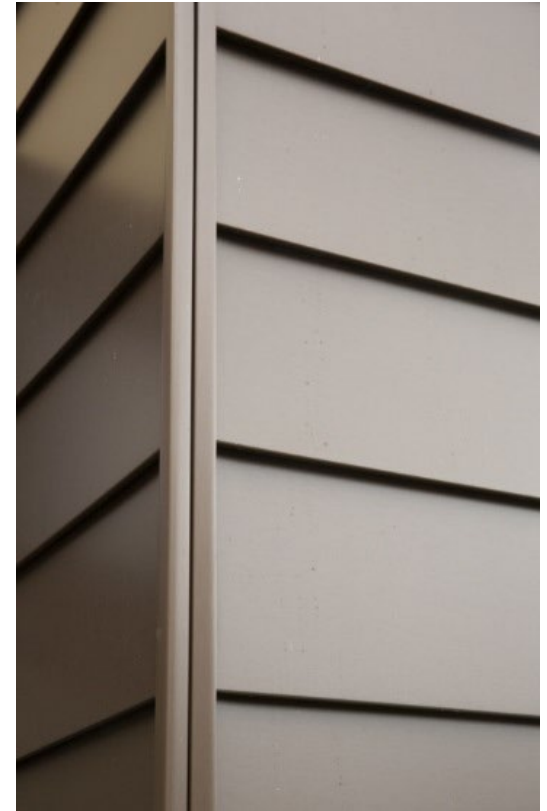
Sustainable solution that fits into its environment. Zinc is 100% recyclable. The nuances of VMZINC allow an optimized interaction with other materials.



Areas of application

- ✓ All vertical facades (90°).
- ✓ In the case of buildings higher than 30 meters, please contact VMZINC.
- ✓ **Load bearing structure**
 - It can consist of:
 - masonry or reinforced concrete wall,
 - main steel framing.
- ✓ **Framework**

The substructure (not supplied) can be either galvanized steel or aluminum rail.



Hotel Restaurant - Bakkeven (Netherlands)



VMZINC Overlapping panel – QUARTZ-ZINC

Kees Rinsema Architect

Individual Housing, Deux-Acren (Belgium)



VMZINC Overlapping panel – QUARTZ-ZINC

Rox Immo, Verviers (Belgium)



VMZINC Overlapping panel – QUARTZ-ZINC

Architectes 4D Partners sprl

Collective Housing, Ougrée (Belgium)



VMZINC Overlapping panel – QUARTZ-ZINC

Nicola Prebenna

House of Department, Saint Lo (France)



VMZINC Overlapping panel – PIGMENTO brown

Boscher Didier, St Lo

House Aveyron, Tremouilles (France)



VMZINC Overlapping panel – ANTHRA-ZINC

AJM Maison Bois (Naucelle)

Collective housing, Braine-L'Alleud (Belgium)



VMZINC Overlapping panel – QUARTZ-ZINC

CERAU Architecture

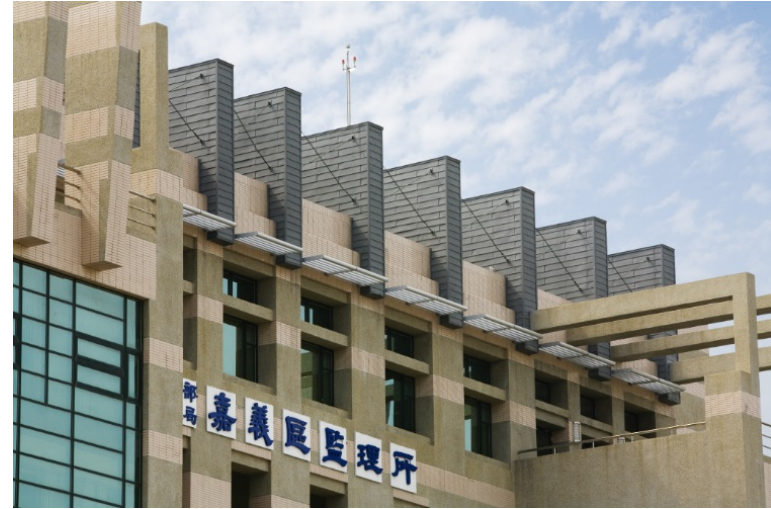
Collective housing, Tournai (Belgium)



VMZINC Overlapping panel – QUARTZ-ZINC

Meunier-Westrade

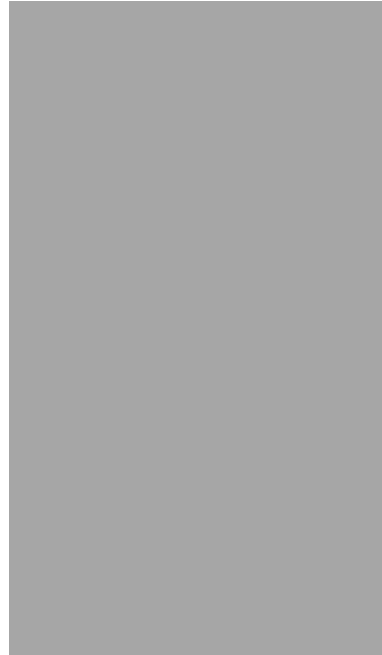
Chi Yi Car (Taiwan)



VMZINC Overlapping panel – QUARTZ-ZINC

Ko-Cheng Liu Architect

Chong Yang-Ku Church (South Korea)



VMZINC Overlapping panel – Natural zinc

Youngsub Kim, Kunchook Moonhwa, architects & Engineers