

VM BUILDING SOLUTIONS

VMZINC & Flat lock panel

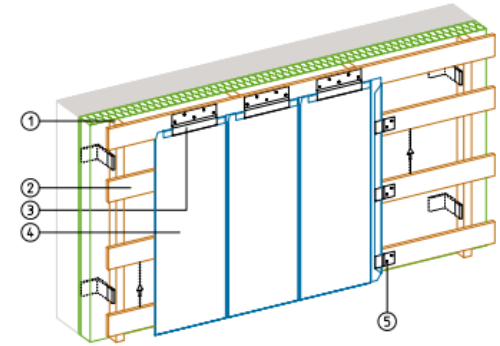


Presentation

The system involves laying the panels on a compatible wooden framework fixed to the supporting structure (masonry or metal structure).

It consists of a wall system of factory-formed panels. The rectangular-shaped panels interlock into each other on the four sides and are secured with concealed fasteners and clips.







VMZINC Flat lock panels offer a simple yet elegant cladding solution that provides a longitudinal flat seam.



1. Wood frame
2. Pine Wood
3. Top sliding clip
4. Vertical VMZINC Flat Lock panel
5. Edge sliding clip

Key advantages



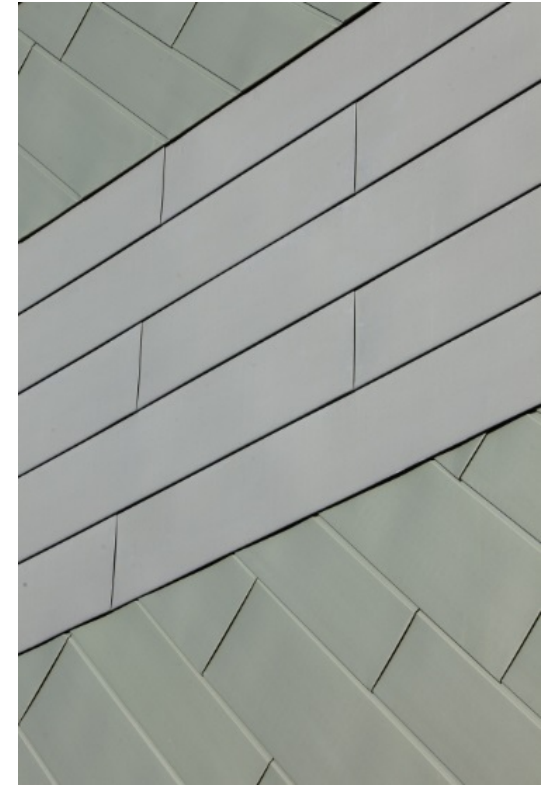
-  Versatile system with a traditional design,
-  Vertical or horizontal installation,
-  Horizontal, vertical and diamond shape,
-  Interlocking with a single fold on all 4 sides,
-  Recessed joints with concealed fastenings,
-  Range of components offering a wide variety of all flashing details.

Areas of application

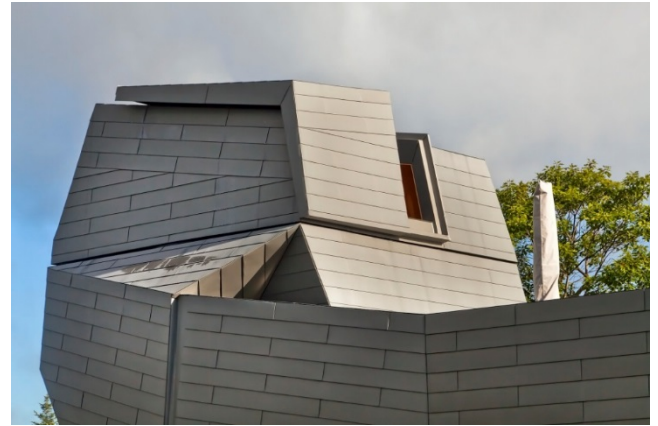
- New or refurbishment projects.
- Flat facades for public and office buildings or collective housing.

Thickness	0.8 mm
Centre to centre	375 mm - 285 mm
Weight*	7.83 kg/sq.m
Length	From 0,5 to 4 m
Width of the joint	10 m

(*) Weight of the system /sq. m excluding framework.



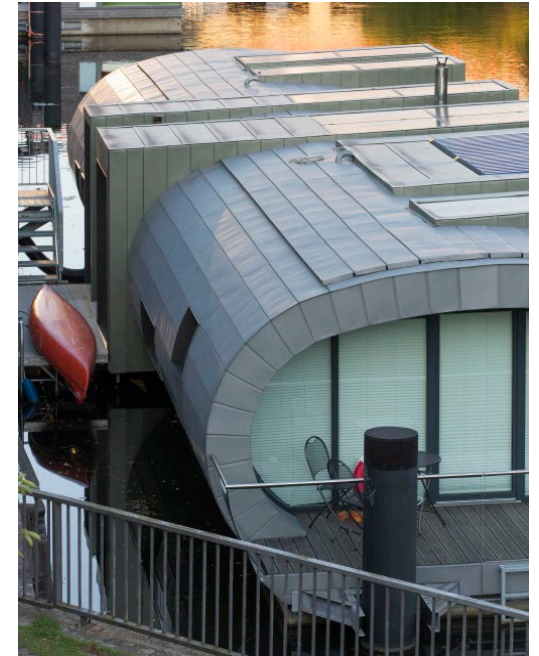
Gemma Observatory, Southern New Hampshire (USA)



VMZINC Flat lock panel – QUARTZ-ZINC

Anmahian Winton Architects

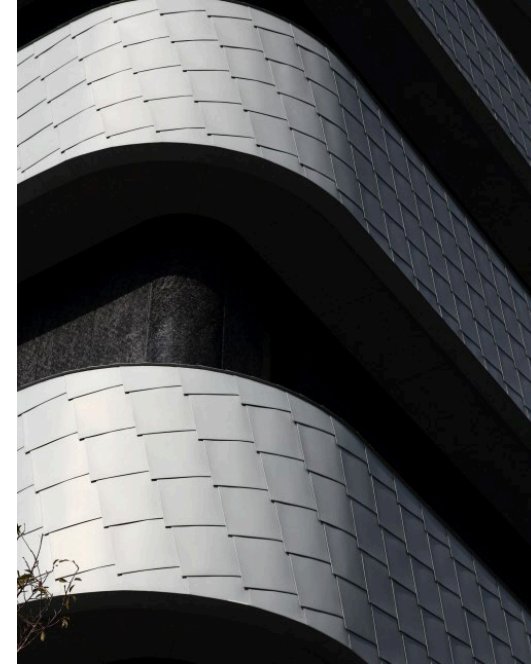
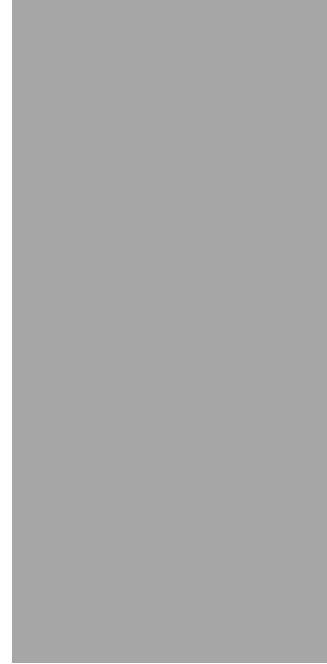
Hausboot, Hamburg (Germany)



VMZINC Flat lock panel – PIGMENTO green

Daniel Wickersheim

General Medical Center Rinku, Osaka (Japan)



VMZINC Flat lock panel – AZENGAR

Nikken Sekkei Ltd

General Hospital, Southampton (UK)



VMZINC Flat lock panel – PIGMENTO green

IBI Nightingale

Alabama Huntsville University, Huntsville Alabama (USA)



VMZINC Flat lock panel - QUARTZ-ZINC

*Nola Van Perursem Architects and Woodward
Construction*

Criminalistic laboratory Johnson County (USA)



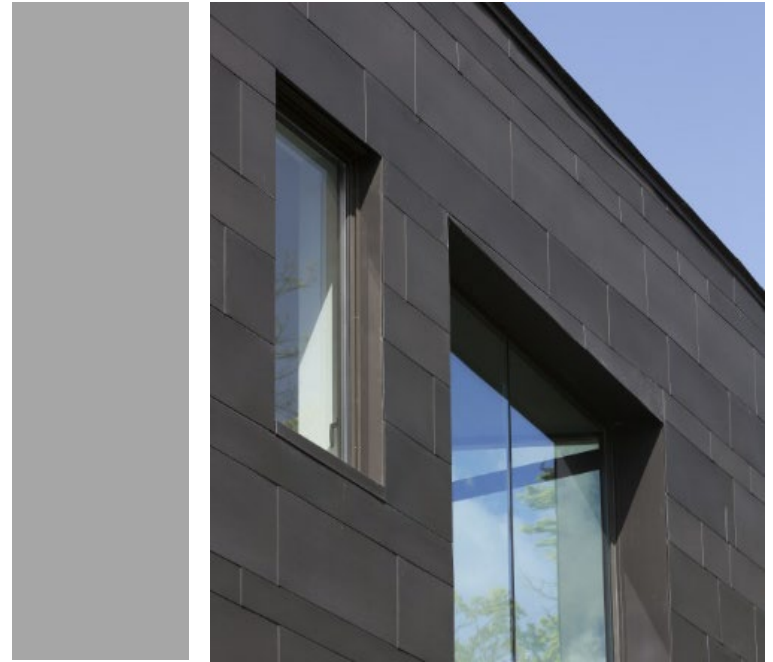
VMZINC Flat lock panel – QUARTZ-ZINC

PGAV Architects

Library, Podensac (France)



VMZINC Flat lock panel – ANTHRA-ZINC



VMZINC Flat lock panel – QUARTZ-ZINC

La Raket Skolan, Kiruna (Sweden)



VMZINC Flat lock panel – ANTHRA-ZINC

Mats Jakobsson

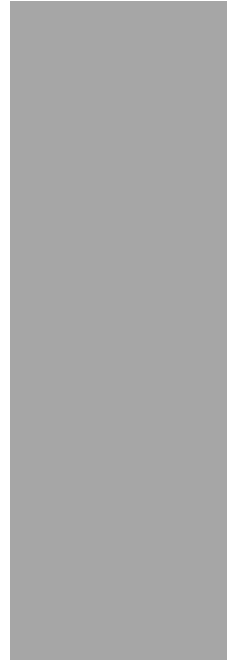
Villa in Casentino Bibbiena (Italy)



VMZINC Flat lock panel – PIGMENTO brown

Romano Donato SRL

Old post office "Plaza Sculpture" (Cloud Wall)



VMZINC Flat lock panel – QUARTZ-ZINC

Baird Sampson Neuert Architects

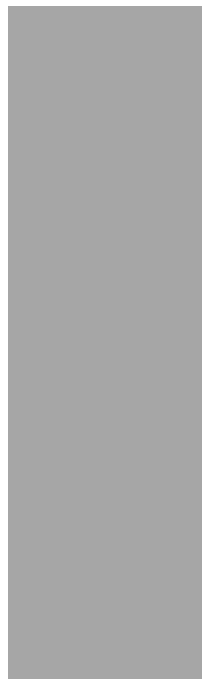
Episcopal "Holy Innocents" church, Atlanta (USA)



VMZINC Flat lock panel – QUARTZ-ZINC

TVS Associates

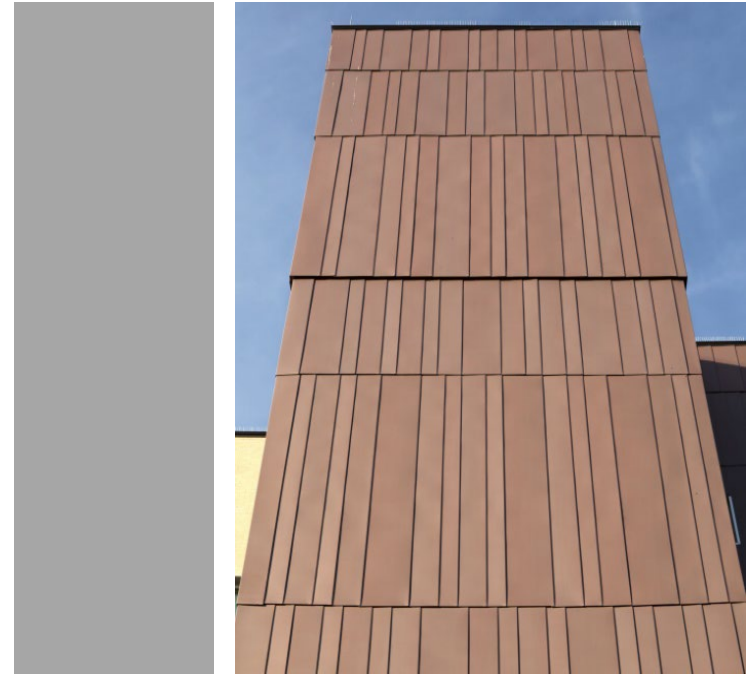
SPA Sede Zambonini (Italy)



VMZINC Flat lock panel – QUARTZ-ZINC

Arch. Sbarretti

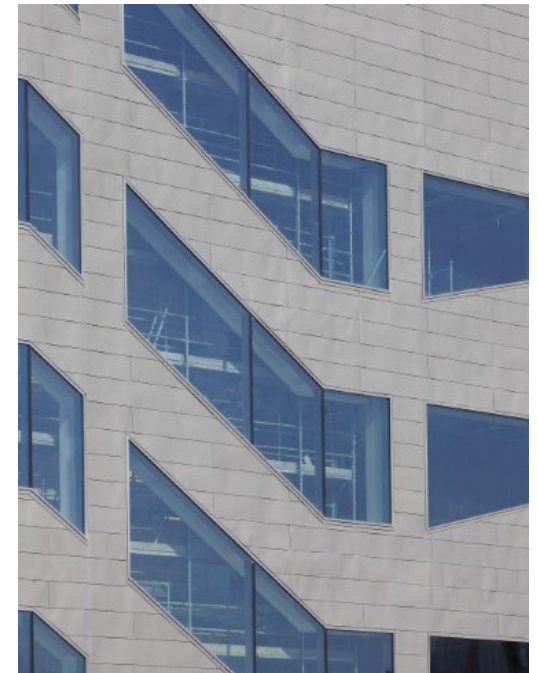
Utah State University, Logan (USA)



VMZINC Flat lock panel – PIGMENTO red

VCBO Architecture, Utah State University

DHUB, Barcelona (Spain)



VMZINC Flat lock panel – QUARTZ-ZINC

MBM Arquitectos

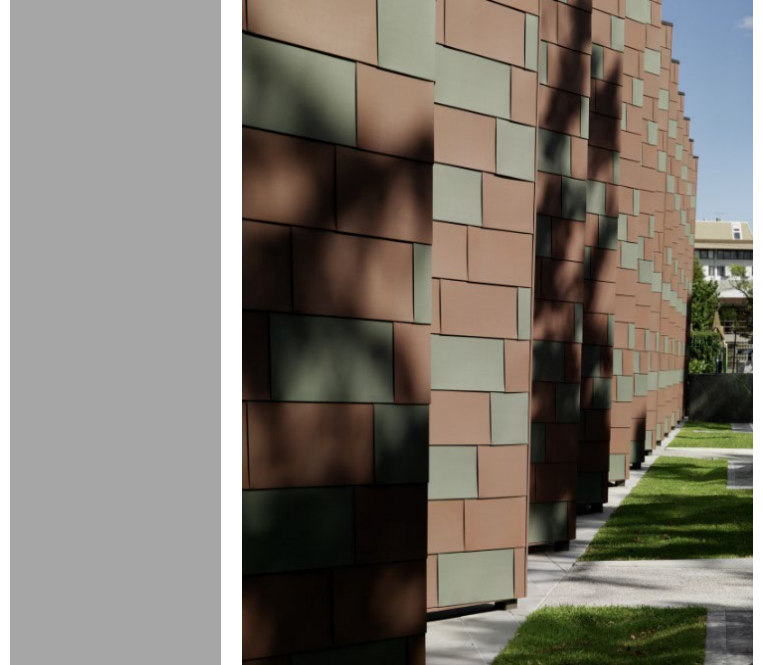
Water treatment building, Oupeye (Belgium)



VMZINC Flat lock panel – QUARTZ-ZINC

Atelier du Lavaux

Saint Mary Cross Mausoleum, Melbourne Cemetery (Australia)



VMZINC Flat lock panel – PIGMENTO red, PIGMENTO green

Architectural Cladding Australia

Tonic Construction



VMZINC Flat lock panel – QUARTZ-ZINC

Residence Walters, Greenville (USA)

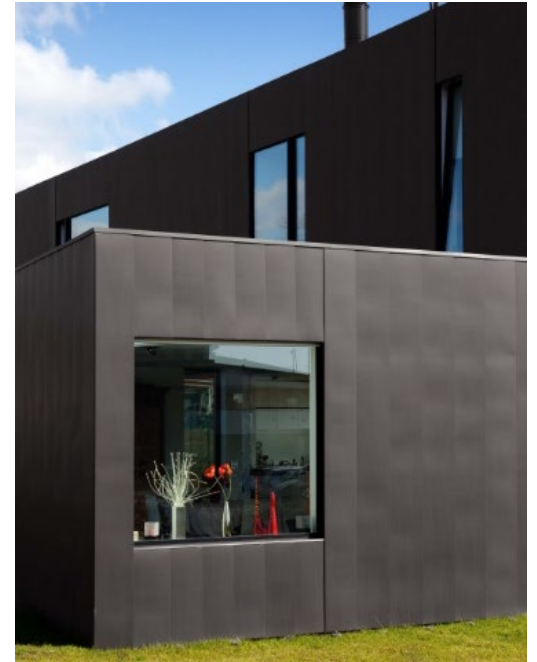
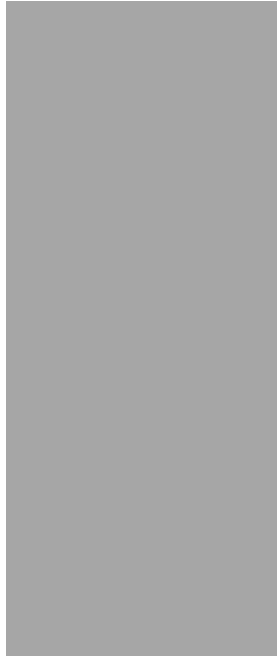
Church, Jeju (South Korea)



VMZINC Flat lock panel – QUARTZ-ZINC, ANTHRA-ZINC

Jun Itami

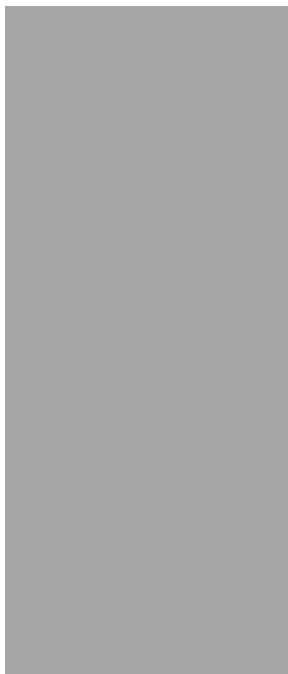
Individual house, Wasquehal (France)



VMZINC Flat lock panel – ANTHRA-ZINC

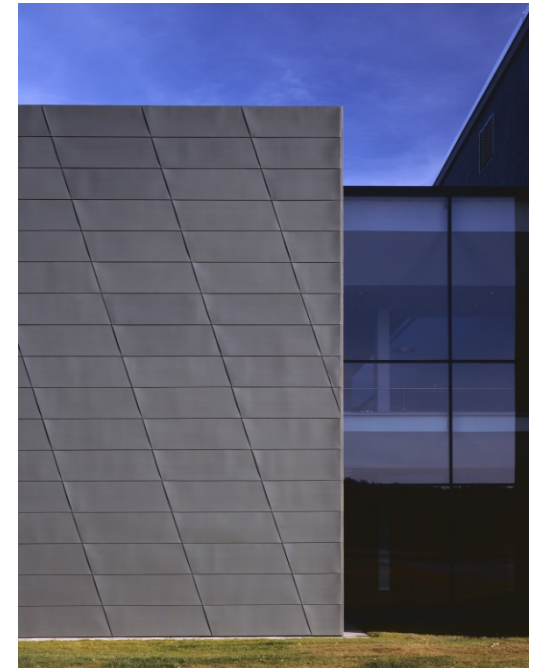
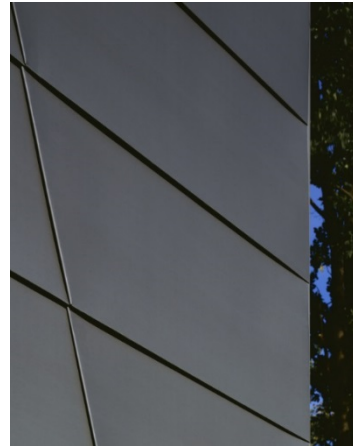
Anthony Vienne

House Sul Lago Maggiore (Italy)



VMZINC Flat lock panel – ANTHRA-ZINC

Maintenance Building – Fassberg airport (Germany)



VMZINC Flat lock panel – PIGMENTO blue

Arch Baumgart Wockenfuss und Partner

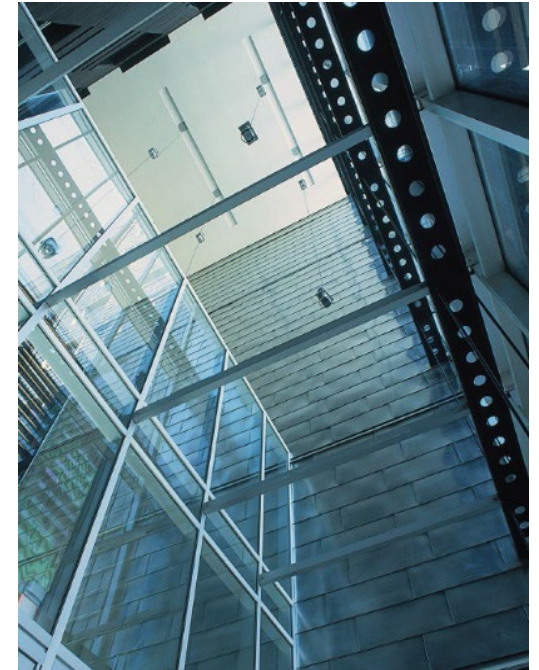
Europe Building, Burgos (Spain)



VMZINC Flat lock panel – QUARTZ-ZINC

BSA proyecta

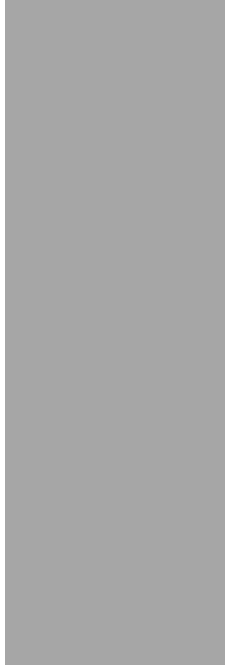
Multimedia City, Montreal (Canada)



VMZINC Flat lock panel - QUARTZ-ZINC, Natural zinc

*Menkes Schnoer, Dagenais
et Dupuis Le Tourneux*

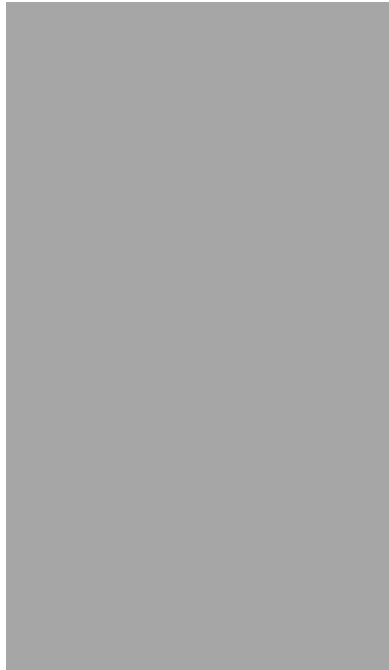
Fishermen federation, Brissac Quince, (France)



VMZINC Flat lock panel – PIGMENTO red

GOA, Angers

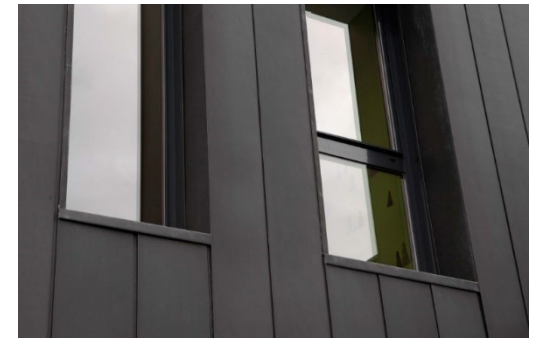
Residential building S.Croce Sull'Arno (Italy)



VMZINC Flat lock panel – QUARTZ-ZINC

ARCH.MASSIMO FORNACIARI

Individual House, Vannes (France)



VMZINC Flat lock panel – ANTHRA-ZINC

Arcau